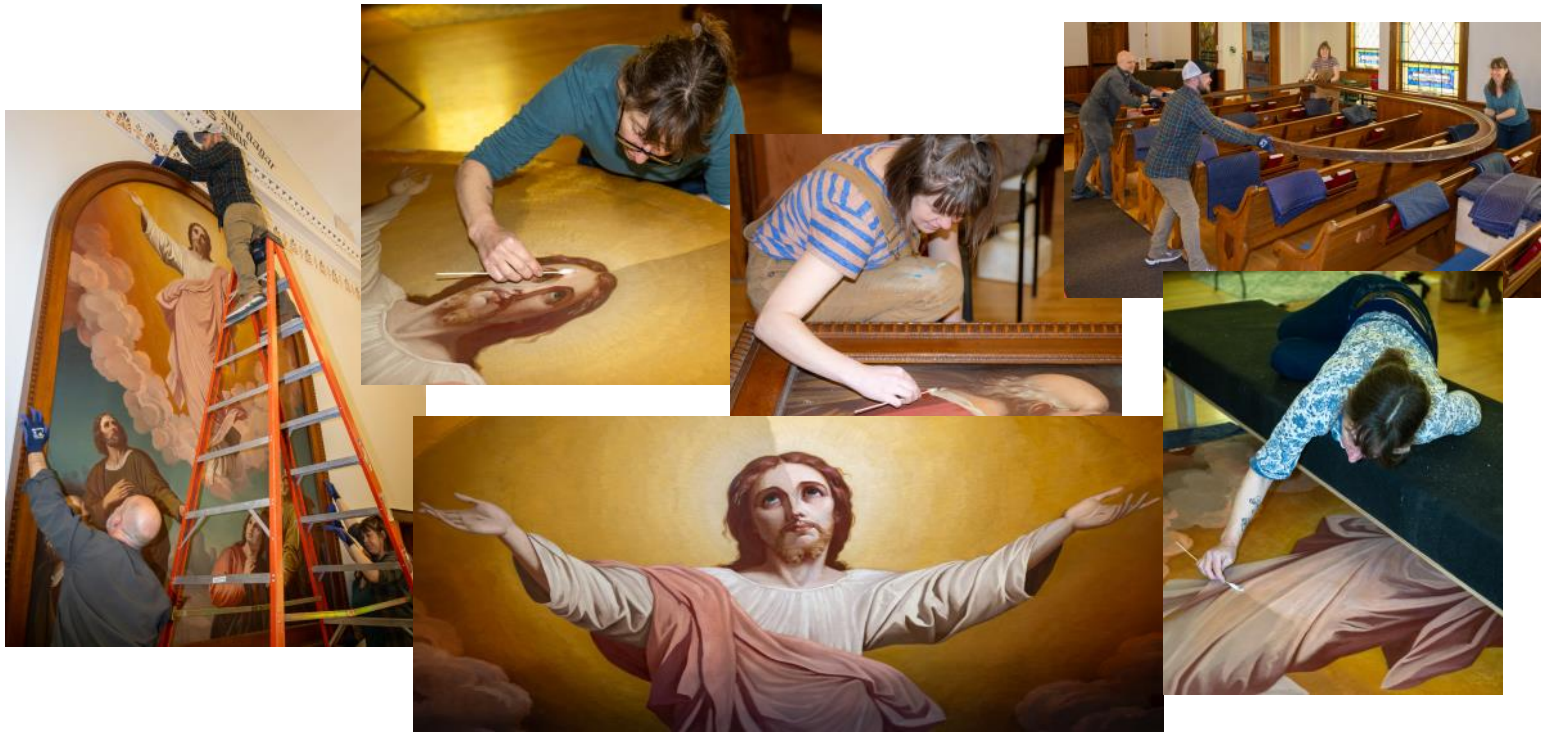


STEEPLE TO PEOPLE

NEWSLETTER OF CHRIST LUTHERAN CHURCH
May & June 2024



Using money from the Memorial Fund, along with support from WELCA and proceeds from the 2024 Swedish Dinner, the iconic painting that has hung at the front of the sanctuary since 1897 was cleaned and restored during the last week of April. Art restoration experts from Twin Cities Art Care spent five days removing layers of dust, soot and grime, repairing holes and touching up damaged spots of the painting. The conservators were surprised how loosely the painting and frame were attached to the wall. When hung back up, it was with a new, secure cleat fastening system. The colors of the painting are now more vibrant and closer to what it looked like when it first graced our worship space over 125 years ago. Additional photos and videos from the process are available on our Facebook page.

Photo credit: Gene Di Lorenzo



Christ Lutheran Church

150 Fifth Street

Marine on St. Croix, MN 55047

clcmarine.org

651-433-3222

Pastors & Staff

Joel Martin, *Pastor*

pastorjoel@clcmarine.org

Hannah Bartos, *Pastor*

pastorhannah@clcmarine.org

Laura Langreck, *Office Manager*

RBPS Bookkeeper, Choir Director

office@clcmarine.org

Kathy Trombly-Ferrin

Financial Secretary

finance@clcmarine.org

Sherri Clysdale,

Gene Di Lorenzo, *Treasurers*

clctreasurer@clcmarine.org

Charlie Anderson, *Custodian*

Kris Simonson, *Pianist/Organist*

Nancy Viebrock, *Pianist/Organist*

Melinda Hoke, *Pianist*

Carol Maurer, *Pianist*

Church Council

Leigh Delisi - President

Terry Gorham - Vice President

Christine Dettmann - Secretary

Teri Fick

Emily Schaefer

Andrew Schmidt

Ann Skoglund

Matt Smith

Chuck Nelson

Dawn McGinley

Chris Thompson

Red Bridge Preschool

Elizabeth Weisberg

Director & Lead Teacher

Phone: 651-433-3222

redbridge@clcmarine.org

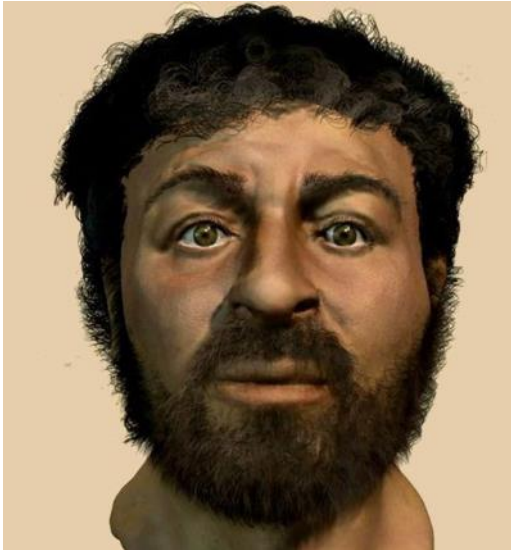


WORDS FROM PASTOR JOEL

While there are no pictures (Kodak or otherwise) detailing what Jesus looked like, there are assumptions we can make – one of which is that Jesus probably did not look much like the painting that has hung at the front of the worship space at Christ Lutheran since 1897. Even before the painting was cleaned, the image of Jesus in the sanctuary portrayed Jesus as being fair-skinned – almost Scandinavian. Now, after the cleaning, this is even more true. The painting has Jesus with long sandy brown hair. The cleaning revealed the artist included some reddish highlights, too. Neither the skin tone nor the hair color reflects what a first century Palestinian Jewish man looked like. If anything, the painting at the front of the church reflects what a Swedish artist believed a Swedish community would want (need) Jesus to look like at the end of the 19th century.

A quote often attributed to the writer Anne Lamott goes something like, *“You can safely assume you’ve created God in your own image when it turns out that God hates all the same people you do.”* Along the same lines, this could also be said, *“You can safely assume you’ve created Jesus in your own image when it turns out the image you have for Jesus looks a lot like you (or people like you).”* Whether it be the painting hanging in the sanctuary at Christ Lutheran for over 125 years, the famous paintings of Jesus by Leonardo da Vinci or Michelangelo, or the many other images and paintings of Jesus over the years – most have portrayed Jesus in such a way that if asked on his application for a driver’s license what his race was, Jesus would check the Caucasian/White box. After all, there is something comforting having Jesus look a lot like you and me.

Developments in forensic anthropology over the last 25 years have allowed researchers, scientists, and theologians to form a better idea of what Jesus actually looked like. In 2001, Richard Neave, a British expert in forensic facial reconstruction, used modern science to recreate the face of a first-century Judean man like Jesus. Using an Israeli skull dating back to the first century, Neave and his team used computer programs, clay, and their knowledge of historical Jewish and Middle Eastern features to create a face that might have hypothetically belonged to a neighbor of Jesus — or perhaps even Jesus himself. The image looks nothing like the Jesus depicted in the painting hanging in the sanctuary at Christ Lutheran. Instead, it shows a man with tan, olive-toned skin. He has dark, curly hair cropped close to his head and a short beard. An image of Jesus that is almost completely opposite of the image we just had cleaned and restored.



Richard Neave's forensic reconstruction of the face of a first-century man from Judea.

While this image might be closer to what Jesus looked like, in the end, it too, is a “best guess.” But it is worth noting your reaction to this image. Does having Jesus look more “Middle-Eastern” with darker skin tones change/challenge your assumptions about who Jesus was? Does having Jesus look more like the faces of the people of Gaza we see on the nightly news over the last few months change your reaction to seeing a Palestinian man holding their lifeless child who was killed by a recent bombing? I ask only because the image we carry with us about Jesus does matter. It shapes how we not only see ourselves and people like us, it shapes how we see those who don't look like us—the other—the stranger. And I don't know if we could truly handle Jesus looking like them. Thankfully, now with the restoration of the painting, we won't have to worry.

Paste, Joel



Dear Christ Lutheran,

I will be away from my desk June 10—August 5. The purpose of my time away will be to rest from regular duties as Office Manager; to more deeply engage in creative, active, and relational pursuits; and to broaden the skillset I bring to my roles at CLC.

Part of the summer will be used for an extended family vacation to Alaska. Langreck family road trip! RV and all! I've thoroughly enjoyed my 11 years as Office Manager at CLC and I also acknowledge it will be rejuvenating to step away for a bit. In my absence, there will be a part-time fill-in to carry out basic office duties. Summer office hours will be 10 a.m.-1 p.m. Tuesdays, Wednesdays and Thursdays. Thank you for being a supportive congregation!

With appreciation, Laura Langreck

WE NEED YOU THIS SUMMER!

There are various hospitality and worship needs on Sunday mornings at Christ Lutheran. Would you like to sponsor altar flowers? Or host coffee time? How about help with communion or read the lesson? How about leading the hymns during worship? Visit clcmarine.org and look for the button to sign up! We're all in this together!

Audio/Video Volunteers

We are looking for people who are willing to learn about the audio/video equipment at Christ Lutheran who would then be willing to be available to help on Sundays this summer, or on Wednesdays or Sundays in the fall. No experience necessary. By learning you are not committing to help every Sunday (or Wednesday), we are simply hoping to expand the number of volunteers we have in order to allow our current volunteers a break now and then. See Pastor Hannah or Pastor Joel for more information or talk to the A/V team soon!



Join us for our last Into the Deep gatherings of the school year.

Menus for the free community meals:

Tacos (May 1)

Lasagna (May 8)

Pulled Pork Picnic (May 15)

Our weekly midweek gatherings will resume September 11.

Psalm 23 Bracelet Making

Psalm 23 is one of the most comforting scriptures in the Bible that reminds us God is with us throughout all of life, protecting, guiding and blessing us. Join us for a special bracelet making workshop on the evening of Wednesday, June 12. Each bead we use represents a different part of the psalm. It makes a great gift -- to yourself, a mother, grandmother, friend, or neighbor! Cost is \$25. Plan on bringing an item to add to our potluck. Sign up by Wednesday, June 5. The workshop will be led by Pastor Hannah and Nichole Paladie, a member of our community, hospice chaplain and co-lead of ETS & Associates.



An idea of what your bracelet might look like.



Red Bridge Preschool is now accepting registrations for the 2024-25 school year. If you know of someone who would be interested in CLC's preschool, send them our way! We offer classes 5 days a week for age 2 through PreK. You can always reach out to the director, Elizabeth Weisberg, at elizabeth@clcmarine.org, with any questions or to schedule a tour/visit.



REMEMBER ALL THE WAY BACK TO JANUARY!?

Thank you to everyone who supported the Swedish Dinner. We served approximately 710 people. More than 110 people volunteered either time and/or food supplies to support the dinner. Thank you to the committee of Tammy Anderson, Rich Grossen, Patty Grossen, Lesa Hoseck, Cindy Kramer, Karna Lennes, Cheryl Reinitz, Mark Rossi and Carol Rossi.

After all expenses, the Swedish Dinner resulted in \$10,300. These funds will be used to fund a portion of the restoration of the painting in the sanctuary, maintain the kitchen, fund at least 4 scholarships for Tanzania and fund several organizations across the St. Croix Valley.

Christ Lutheran Church
 General Fund Operating Statement
 Three Months ending March 31, 2024
 Unaudited

INCOME	YTD Actual	2024 Budget	%
Total	\$158,611	\$567,500	28%
EXPENSE			
Salary & Benefits	\$95,581	\$379,000	25%
Other	60,256	188,500	32%
Total	\$155,837	\$567,500	28%
Operating Balance	\$2,774	\$0	

This statement reports the Year-to-Date Net Operating Balance for the General Fund for the three months ending March 31, 2024. It compares actual realized income and expense to the total year Operating Budget that was approved by the congregation at the annual meeting. Generally, about 25% of the Budget should be collected and consumed by March 31, 2024. Givings are approximately \$17,000 greater than the budget due to an extraordinary one-time donation and expenses are approximately \$14,000 over the budget due to timing of the budgeted annual insurance premium expense.

There are many ways you can contribute to Christ Lutheran:

Cash or check

Direct deposit to our bank account

VENMO

Givings through the VANCO e-giving platform

Please contact us at clctreasurer@clcmarine.org or 651-271-7385 for any questions or more information.

In Gratitude,

Gene Di Lorenzo and Sherri Clysdale
 Council Co-Treasurers

WE INCLUDE IN OUR PRAYERS...

Joyce Ritz

Martha Albertson

Patrick (son of Sandra Eberhardt)

Mindy Mason (sister-in-law of Ellen and Neil Johnson)

Rosier family (friends of Jessica Hinz)

JoAnne Pruden (sister-in-law of Sue Pruden)

Brad (friend of Pat and Lon Pardun)

Chet Saunders (brother-in-law of Peg and Chuck Arnason)

Jack Schmitz (father of Amy Root)

Kelly Nightingale (friend of Linda Nyman)

Gloria Hempel (mother of Jody Nyenhuis)

Al Stiles (friend of Jeannie D., Sue P., and Andy C.)

Carole (cousin of Linda Nyman)

Debbie Carlson (daughter of Jennie Raffel)

Madeline Brace (niece of Carol Ledo)

Joe B. (brother-in-law of Amy Root)

Jeff G. (friend of the Roots)



FAITH FORMATION

Day Camp

"The best week of the summer!" is almost here! We are excited to be offering a day camp again for Kindergartners – 6th grade, Monday, June 24th – Thursday, June 27th! Awesome young adult leaders from Luther Crest Bible camp will be here to lead. Monday – Wednesday will be 9 a.m. – 3 p.m. Thursday, we will wrap up at noon. Cost: \$40, with full and partial scholarships available. Snacks will be provided. Lunches should be brought from home. Register at



www.clcmarine.org/daycamp. Students should register for the grade they just completed. We will offer a pre-school option from 9-noon, too. If you, or your youth (7th -12th grade+) would like to help make this happen, please talk to Pastor Hannah.

Faith Step: Confirmation



CONFIRMATION

Affirmation of Baptism

God's blessings to Chaz DeMars, Croix DeMars, Heidi Hinz, Rhett Langreck, Adam Lapos, Joss Vodden, and Ryder Wylie, who will be celebrating their Confirmation Faith Step on Sunday, May 19th. May God continue to guide these young people in their faith and learning.

Faith Step: Blessing of the Graduates

Sunday, May 5th will be a special day in the life of our congregation as we celebrate a faith step for our high school graduates: Croix DeMars, Chaz DeMars, Belle Lapos, Chase McCarty, Bella Plummer, Cameron Schuldt, Ella Tryon, Parker Ziegler. Join us during the 9:30 worship service for a special blessing and presentation of blankets.

Thank you, CLC!

More than \$2,600 was raised during our annual silent auction supporting youth ministries. Thank you to all who donated and bid! A special thanks to Sandy Mondor and Megan Lapos for their dedicated leadership with this fundraiser!

Faith Step: Holy Communion

God's blessings to five of our youth who celebrated their Holy Communion Faith Step on April 21st. Titan Aukstakalnis, Boden Aukstakalnis, Kyla Bixby, Elijah Schumann, and Kane Roach.



Join us at Big Marine Park Reserve for our first **Pray and Play** of the summer. It's a time to hang out and enjoy fun in the sun. Kids and adults welcome. Pastor Hannah will have a simple faith-based activity to share too! Tuesday, June 11th, 1-3 p.m. There is no fee, though you do need a park pass to enter the park. Please let Pastor Hannah know if you plan to come.



Join us at outdoor worship on Sunday, June 2nd for the **"Blessing of the Bikes and Those Who Ride Them."** It's a favorite Sunday of the year for kids and adults. Bring your bikes (pedaled or motorized) and/or helmets if you wish. Plan on coming forward after the sermon for a special blessing.



Walking with a Pastor

On most Tuesdays this summer, Pastor Joel and Pastor Hannah will make themselves available for walks with individuals, families and groups of people. Walking with a Pastor is a great way to get some exercise, enjoy the beauty of the area and to be in conversation about things that matter (whether it be questions, wonderings, sharing of life's stories, etc.)

Pastor Hannah will join you for a walk in Marine, Scandia, Hugo or Forest Lake areas.

Pastor Joel will join you in the areas around Marine, Scandia, or Stillwater.

As Pastor Joel did last year, he plans on walking the St. Croix bridge trail at 10 a.m. on most Tuesdays, but

is also open to walking with you at locations closer to the church. If last summer is any indication, some weeks there might be a small group, some weeks it might just be one or two people. Please contact the pastors directly to schedule a walk in the coming weeks: pastorhannah@clcmarine.org / pastorjoel@clcmarine.org

Views of the Valley - Adventurers' Trip

Tuesday, May 21 at 10:30 a.m.

Join us as for a day of fun as we load the church mini-bus and take in the spring sights of the valley. We will journey to Winehaven Winery in Chisago City for an early lunch, then stop by Dairy Queen for a cool treat on the way home.

Pack a snack to share on the drive and money for your refreshments. Sign up by Wednesday, May 15th.



A Gift for Us!

Do you remember the large (diseased) pine tree that was taken down last summer near the parking lot? Jeff Roach (whose family worships with us on Wednesday nights) had a great idea to take the wood and create a beautiful bench for us! Take a seat and enjoy during worship this summer. Thanks, Roach family, for this tree-mendous gift!

We will continue our monthly gathering for 55+ church and community members during the summer. Mark your calendars!

May 28

June 25

July 23



Connections is an informal time to gather for conversation, games and fun on the fourth Tuesday of the month. All are welcome! We meet in the Nyman Center at 10:00 a.m.



CHRIST LUTHERAN CHURCH
150 Fifth Street
Marine on St. Croix, MN 55047

NONPROFIT ORG.
U.S. Postage
PAID
Marine on St. Croix, MN
Permit #2

WORSHIP OPPORTUNITIES AT CHRIST LUTHERAN

Into the Deep (*ends 5/15 for the spring*)

A 30 minute, midweek worship experience on Wednesdays in person at 6:30 p.m. and shared online after. (Free meal served at 5:30 p.m.)

Sunday Worship

Join us for worship on Sunday morning at 9:30 a.m.

(Livestreamed and available 24/7 after)

Sunday Worship on TV

Valley Access Channel 14 offers our Sunday service on Thursdays at 9 p.m. and Fridays at 4 a.m., 9 a.m. and 3 p.m.

All current and previous worship services are available on Vimeo:

vimeo.com/christlutheranchurch

Summer Worship

Worship with us Sunday mornings on the lawn at 9:30 a.m. (starting May 19). Chairs will be set up in the air-conditioned Nyman Center for those who prefer to worship via Livestream inside, and then be present for outdoor fellowship time after worship. If weather doesn't allow, 9:30 a.m. service will be held in the sanctuary.